

April/May 2010 Spring Newsletter

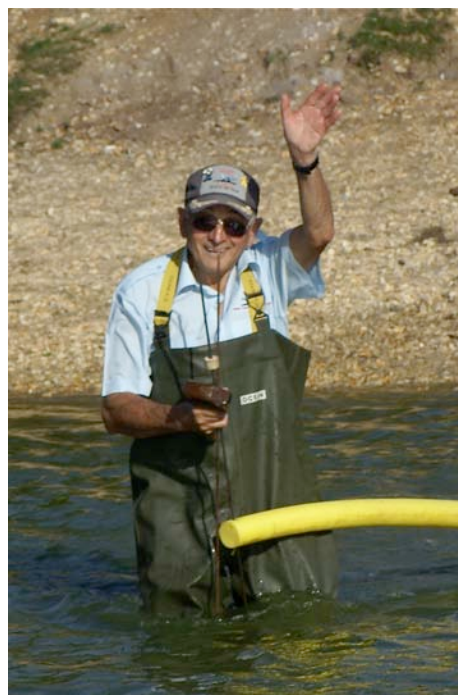
Scale Captain's Chat

Hi Folks,

Welcome to the latest newsletter and the beginning of another sailing season. Let us hope the better weather continues and we can all enjoy sailing on our beautiful Setley Pond that is now VERY full with fresh water.

A big thank you for all your help and support at the Highlife Exhibition, it was great to see so many wonderful models and we managed to fill both halls and raised over £600 for the RNLI. We were visited by Barrie Stevens and his Wife from Marine Modelling International and we will be seeing his report and a write up on the club in print in the magazine in due course.

The AGM went well (see separate report) and was well supported by the members. Please note the comments in the AGM report re. visitors coming to the lake with members and wishing to sail; also please wear your name badge at the lake - it does help us to ensure that only those who should be are sailing. Please look out for the name sheet at the lake to put your name down if you will be able to help us at the Lymington Show on 4th September, we will be needing some extra hands. Please note that if you wish to exhibit you must leave your exhibits on show for the full day! (more about this event in due course).



The Scale Captain waves a cheery welcome - or is he asking permission to be excused from the pond?

On a personal note, at the end of April I am having an operation on my left hand so will be missing from the pond for about four weeks as I will not be able to drive etc. As Arnie says "I will be back" as soon as I can but in the mean time your committee will be around to keep things running along.

Happy Summer Sailing, David

2010 Dates for your diary

- | | |
|--|---|
| 30th April: was the last date for paying 2010 Club Subscriptions! | Weymouth (for info only, no club participation). |
| 2nd/3rd May: Early May Bank Holiday weekend. | 25th July: Lymington Lifeboat Day - Club Stand, Lymington Lifeboat Station (details later). |
| 9th May (Sunday): Vintage Yacht Group visit Setley Pond. Club Sailing OK. | 30th/31st July, 1st August: Navy Days at Portsmouth Historic Dockyard (for info only). |
| 30th/31st May: Spring Bank Holiday weekend. | 22nd August (Sunday): Steering Competition, Setley Pond - Solent Cup: 9.30am start. |
| 4th June (Friday): Evening BBQ, Ray and Carol Hellicar's House, (see end of Newsletter). | 29th/30th Aug: Late Summer Bank Holiday weekend. |
| 6th June (Sunday): Steering Competition, Setley Pond, Richard Graham Trophy: 9.30am start. | 4th Sept. (Saturday): CLUB EXHIBITION in the Masonic Hall, Lymington (see AGM minutes). |
| 27th June (Sun): Navy Day, Setley Pond: 9.30am start. | 18th December (Saturday): Christmas Lunch, South Lawn Hotel, Milford on Sea. |
| 10th/11th July: Int. Maritime Modelling Festival, | |

Editorial: A full pond and a widening web!

Our thanks are due to the Club Committee for arranging for the pond to be topped up by the Forestry Commission... we can now launch our boats without getting out of the car!

When not producing this Newsletter, my "day job" nowadays seems to be running the Club's web site. At least that's my excuse for the fact that most of my models need attention! However the web site does seem to be going from

strength to strength, with an average of over 400 viewings per day so far this year. Our visitors access the web site from all over the world with recently quite a lot of interest from Russia! It has also resulted in the offer of an accommodation paid visit to Spain (see below). Those of you who can not access the internet from home may have a friend or relative who can show you our web site; ask them to "Google SRCMBC" or use the magic words: "srcmbc.org.uk". You can also view our web site at your local library, or watch one of my demonstrations at Club Exhibitions and Lifeboat days... your models may well be featured in our photograph collections. My thanks to all of you who build those fine models which draw so much praise at the pond, at our exhibitions, and on the web site!

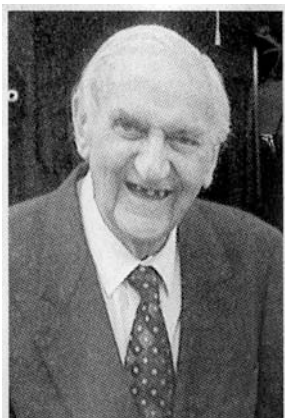
Finally, I'm afraid that this newsletter has lots of official stuff... AGM minutes, revised club constitution, and so on, ...it must be that time of year!

Peter Taylor, Your Editor.



News

In Memoriam - Arthur Lord



It is with great regret that we have to inform you that Arthur Lord passed away on 2nd February, 2010. A highly respected cinema organist, Arthur's career had included accompanying Gracie Fields on a nation wide tour, and his own BBC Light Programme radio recital each Sunday evening. In later years he co-found, with his son Graham, a company which built and supplied custom-made computerised church organs. It was Arthur's enjoyment of sailing which led to him taking up model boat building. He was one of the Club's founding members, and was a staunch supporter of the club over many years.

Arthur's Funeral was held on Monday 15th February at All Saints Church, Milford On Sea. Our sympathy to his wife, Rene, his children, and grandchildren..

Eastleigh & District Model Boat Club



We have had an invitation from the Chairman and Members of the Eastleigh and District Model Boat Club to attend and sail during their Open Day at the historic Twyford Water Works, Hazeley Road, Twyford, Winchester, SO21 1NH, on **Sunday August 8th**, between 10am and 4pm. Portsmouth and Waterside Clubs will also be attending. Would Club Members who would like to attend please let David know so that he can give the Eastleigh Club numbers.

1st International Model Boat Festival, Madrid



The Club has received an invitation from the Naval Club R/C Fuenlabrada to be represented at an **RC Model Boat Exhibition** on the weekend of **11th and 12th September**, in Fuenlabrada, Madrid. This is in conjunction with the 12th Annual National Meeting involving clubs from different regions of Spain, which they now wish to make International. To that end the City Council has made the generous offer of funding two double rooms for two nights in a three star Hotel for members of the Club. The Exhibition takes place in a city park with a large lake for demonstrating the model boats, and ends with an afternoon barbecue for participants.

Members wishing to attend, or wanting more information, should contact Peter Taylor as soon as possible. Email: info@srcmbc.org.uk, phone: 023 80554670 (please leave a message).

Draft Minutes of the 2010 AGM

The 2010 AGM was held on 7th April at the Cricket Pavilion in Vaggs Lane, Hordle at 7.30pm; 27 people attended (a good turnout). Apologies were received from Pete & Jenny Perry, Sam Glenn, Eric Kirk, David Reith, Harold Hartigan, Alan Furness, Ray Hellicar, Brian Rolls, and John Cooper. The minutes of the last AGM were read and approved, there were no matters arising. *Proposed by Bob Eaton; Seconded by Carol Hellicar.*

Captains Report

The Captain welcomed members to the meeting and reported that 2009 had been another good year, the weather was good but kept enough water in the lake to sail. Navy Day was held again being a success with members, which resulted in a good turnout and a good number of boats. The 1st steering competition unfortunately had bad weather, it was better for the 2nd; the Captain thanked John Frost and Andy Davis for all their hard work. Our Harbour was used last year and was enjoyed by everyone, but due to the cold water has not been used so far this year.

The BBQ at Ray & Carol Hellicar's went well, with approx 40 members attending and fine weather; Ray and Carol were thanked for hosting this night and the event is going ahead this year on 4th June. David and Andy Soffe were thanked for doing the cooking.

The Xmas Lunch was a good success with 60 members attending in the South Lawn Hotel function room. The Captain thanked Andy and Lorna Soffe for organising the event and it has been booked again for 18th December with names now being taken and already 5 members on the list, cost will be approximately £18 per person (excluding drinks).

The Exhibition at Lymington Lifeboat went well with lots of support and help from members; it will be hosting again this year on 25th July.

The Exhibition at Calshot Lifeboat did not go well, the weather was poor and displays were set up outside and took the brunt of the weather with a table blowing over and several boats being damaged. Chris Chattaway did well with the pond allowing children use of his boat and collecting funds for RNLI. But it was felt that we were not exactly well looked after and were not appreciated by the RNLI, so the committee have decided not to do this event this year. We have had no notification of how much was collected.

The Exhibition at Highcliffe had a good attendance and a good number of boats. Before we booked this event we did write to the Chairman at RNLI Highcliffe concerning various comments from members re. the parking, having to pay for the Hall and having to pay for the tea and coffee. The letter was read out together with a reply informing us that there would be no fee to pay for the Hall and tea and coffee was always free for exhibitors; also the event was put in the RNLI magazine for the first time. This year a second room was used which was fully taken up with boats; the only disappointment was that, before the event closed, boats were taken away resulting in gaps on the tables. The event raised £605.00 together with £65.00 raised by Peter Taylor from selling his photos. *Report acceptance Proposed by Don Hoe; Seconded by Ken Dyer.*

Treasurers Report

The Treasurer gave the Financial Report which showed the club were in a good financial position and there was no need to raise subscriptions at this time. The subscriptions are now due and out of 151

members 87 have so far renewed. Also members were advised that we still have clothing in stock but not the correct sizes that members have ordered, we are now in the process of making a order of all sizes and clothing. *Report acceptance Proposed by Don Brazier; Seconded by Arthur Shannon.*

Election Of Officers

The Captain, Peter Soffe, Andy Davis, John Frost, Peter Oram, Ken Dyer, Arthur Shanon, Lorna Soffe were re-elected. *Proposed by Andy Soffe; Seconded by Chris Chatterway.*

Events Calendar

The 2010 event calendar was approved by the members. The Captain explained that the leaflets were printed on sturdy card this year, which would last longer than the normal paper, and everyone renewing their subscription would get one. This year's calendar also includes Bank Holidays, which hopefully will assist members in planning their year. The principal Club Events for the year were summarised (*see "Dates for your Diary" - Ed.*).

Club Constitution

The "Club Constitution" (*see below*) had been revised to clarify between those rules applying to the Sailing Section, and those to the Scale Section; where the rules had become outdated, David and Peter Taylor had suggested revisions to bring the rules into line with present club practise. The new rules will be displayed at the lake every Thursday and Sunday. Andy Davis explained the steam rules - steam boilers need to be tested every 4 years, and safety valves tested yearly, with certificates provided.

Roger Yeatman raised the issue of Car Park spaces. There were often not enough for members at the waters edge and particularly for disabled members. It was stated that, unfortunately the Club is not able to do much about the problem as the car park is public. At present water from the lake has actually taken over part of it! Possibly, if needed, able bodied members can move if a disabled member turns up.

There were no further comments.

Club Exhibition, Masonic Hall, Lymington

The club will be doing a charity exhibition on 4th September. Parking at the Hall will be only for members and will be marshalled by the club. There is a cafe in the hall and this will be open on the day to attract more people in. This event needs to be well advertised e.g. Posters, Newspapers, Hospital radio etc. When this event was mentioned by David to members, there was a lot of interest, more than for Highcliffe. Stands will include RNLI Lymington, Andy Griggs, and Lymington Hospital. Poole model boat club will attend

It was suggested that a separate organising committee might be needed, but it was decided that members could volunteer and that the present committee could delegate jobs. There will be no pond set up for using boats; static display only. It was also mentioned that other models, e.g. cars, tanks etc., would attract extra interest; this will be discussed.

Volunteers' names will be recorded on club days. As this event will be bigger than those that we usually do, members need to appreciate that their help will be needed; also if they bring models they need to be displayed from opening at 10am to finish at 4pm. No admission will be charged but a donation for entry will be asked for, maybe 50p to £1.

A committee meeting will be arranged to sort matters out during June/July.

Any Other Business (1)

Roger Yeatman asked for the following to be brought up at the AGM:

He was concerned that too many members were in the club... 151 if everyone re-joined; this would cause too many boats on the lake, frequencies not being available, difficult parking, and therefore it should be capped.

In reply, it was mentioned that our Membership includes members who never sail, family members, members who only exhibit, and members who only go to social events. Members felt that we should not cap membership at present because this would result in losing people who want to start the hobby, who want the knowledge from our members, and new blood since we do lose members each year due to various reasons. No problems have been experienced but the committee will keep an eye

on lake usage and any resulting problems. It was decided not to cap membership by a large majority of members at the AGM.

Roger was also concerned that the club existed to help design, build, and develop model boats, and that "Ready To Run" (RTR) boats did not come under this category.

In reply, David brought two of his own boats in to show that RTR boats did follow the rules of the club, and that these boats do encourage members to start sailing and eventually to build their own boats. It was decided that the problematic RTR boats were those that are bought cheaply and were only specified as "27MHz" or "40MHz" with potential radio interference with or from our boats. The public who bring these boats to the pond are not aware they are causing problems, and we therefore explain to them the problems and try to educate them for the future. The committee explained that everyone has to start somewhere, and that when new applications are taken they are checked for what boats they have, and whether they do attend the lake. The members agreed to accept RTR boats but not ones only specified as "27MHz" or "40MHz".

Roger also suggested that the reason for allowing a large number of members into the club was for funds, which he felt were being used on items that were not needed, for example banners and table coverings. All members agreed that they made the club look more professional at the lake and at any exhibitions we attend, therefore club funds were being used to the advantage of all members.

Any Other Business (2)

The Captain presented Alan Bond with a new badge carrying his new title of "The Professor".

Shelley and Barry Thomas advised the meeting that they were prepared to provide bacon sandwiches for club members when they are down at the lake, and would ask for a donation to be put in the charity box for the Dogs Trust.

The committee have asked all members to wear badges at all times, and members would be asked for proof of membership if not worn; replacement badges can be supplied if required.

Members who bring friends or family who are non-members and want them to sail must sign them in as non-members and pay £1.50 for the day; this is to cover insurance which we have to pay yearly. This insurance covers all members to sail either on club days or any other day, at exhibitions with the club or otherwise, including abroad.

Shelley Thomas asked that when members are at the lake and near tables with boats on, that they take care not to damage any boats.

Vera Winter raised the issue of the pot holes, which seem to have taken over the road. It was confirmed that the council are aware of them, and they will be repaired when the weather is better.

The issue of dog poo bins and, notices to remind the public about clearing up after their dogs, was raised due to the excess of mess around the lake. Unfortunately bins can not be provided due to vandalism (and their ending up floating in the lake) and notices cannot be put up; the committee have already asked.

Before closure of the meeting, John Frost thanked David for everything he does for the club which would not run without him. The Meeting was brought to a close at 9.30pm.

The Revised Club Constitution

(Revised 9/4/2010)

1. Title

The Club shall be called **The Solent Radio Controlled Model Yacht Club**. The Club comprises a **Sailing Section** and a **Scale Section**.

2. Objects of the Club.

The objects of the club shall be: -

- (a) To encourage the design, building and racing of the International RM, and IOM class, the National 36R class, and the 6 Metre class of Model Yachts.

- (b) To research, design, build and operate scale model boats of all kinds propelled by any means but excluding the use of any internal combustion engine.

- (c) To further the interest in model boating and yachting in any other way.

3. Government

One Constitution shall cover the activities of both sections of the club but it may include clauses specific to one section. No alterations to the Constitution shall be permitted without the agreement of the majority of members present at General Meetings of each section. Nor will either

section be able to vote on matters solely concerning the other section.

The officers of the Club shall be: A Club Management Committee for overall management and administration comprising the Club President and the Sailing Section Secretary and Scale Section Captain.

The Section Committees shall be as follows:

Sailing Section Hon. Secretary, Hon. Membership Secretary, Hon. Treasurer, Hon. Measurer and three other Senior Members. The Committee shall have the power to co-opt additional members to the Committee if it is in the club's interest to do so.

Scale Section: Scale Captain, Hon. Treasurer, Steam Engineer and one other Senior Member. The Committee shall have the power to co-opt additional members to the Committee if it is in the club's interest to do so.

Each Section shall hold committee meetings, with a quorum of four, as required to deal with the management and organisation of the clubs activities. General decisions agreed at these meetings to be included in the section's newsletters. Liaison between the two Committees shall be on an informal basis to share information, agree matters of common interest such as sailing times, special events, or illness and membership matters. All Officers and members of the Section Committees shall retire annually and are eligible for re-election at the Section AGMs. Names of members nominated for any of these Offices shall be in writing to the relevant Section Committee not later than 28 days before the AGM. These nominations to be duly proposed and seconded, and the nominee must sign to the effect that he is prepared to serve if elected. Scale section members are not allowed to propose or vote for any members of the Sailing Committee and Sailing Members are not allowed to vote for any members of the Scale Committee.

4. Membership.

The Club shall consist of Senior Members, over the age of 18, Junior Members, under the age of 18, and Honorary Members. Member's wives, husbands, or partners, may be considered 'Honorary Members' of the club unless they wish to join as 'Senior Members' paying the full subscription. Senior Members will receive a Section news letter which will be published on an informal basis. Honorary Members and Junior Members shall have no voting rights at General meetings of the club sections. All candidates for membership shall apply to either the Sailing Section or the Scale Section and shall be proposed and seconded by members of that section and balloted for at their respective

committee meetings. Election must be by unanimous vote of those present. The Committee's decision shall be final. Any member of either section wishing to join the other section must separately apply to that section and be approved as above. The joining fee will not apply in this case and a reduced subscription may apply.

4A. Junior Members under 16 yrs age

All members children under the age of 16 wishing to sail/attend the club must be accompanied by a Parent, Guardian or Carer. The club cannot accept responsibility for any unaccompanied children.

5. Subscriptions.

The annual subscriptions for both sections of the club shall be set by their respective committees and be approved at the section AGM. The Annual subscriptions for senior members shall include any fees payable to Affiliated bodies as agreed by the respective committees. Annual subscriptions for junior members shall be half that of Senior Members. A family membership subscription (at twice the Senior Membership rate) will provide membership for one Senior Member, one Honorary Member, and any Junior Members within that family. Members joining after the 30th September in any year shall pay half fees. New members shall pay an Entrance fee to cover the cost of providing copies of club literature.

Annual Subscriptions shall be paid in advance and be due on the 1st April each year. Members whose subscriptions remain unpaid at 31st May shall be deemed to have resigned. If subsequently they wish to return to the club, normal entry shall be sought as provided in Rule 4.

6. General Meetings.

The Annual General Meetings of the Club Sections shall be held in April of each year. Six members of a Section may call an extra-ordinary General Meeting of that Section on the written application to the Hon. Secretary (Sailing Section) or Scale Captain (Scale Section).

Either Section Committee may call an extra-ordinary General Meeting of the Section at any time for the discussion of Specific Section Business. Notice of any motion to be proposed at any General Meeting, with the names of the proposer and seconder, shall be given to the relevant Section Committee at least 14 days before the meeting, and shall be included in the circulated copy of the Agenda. Members shall have at least seven days clear notice of any General Meeting, with the Agenda and (for AGMs) the previous year's AGM minutes.

Either Section Committee may request a meeting of the Club Management Committee for the

discussion of business which has implications for both sections of the Club.

7. Accounts and Audit.

The two sections of the club will be separately responsible for controlling their own finances through separate bank accounts. Each Section committee will be responsible for controlling income and expenditure, setting subscription rates, and maintaining proper records of all receipts and payments.

The items of common expenditure including Insurance and Pond rental shall be arranged and paid for by the Club Management Committee and invoiced in an appropriate manner. The financial year of the Club shall run from 1st April to 31st March each year. The Accounts of each Section shall be audited annually after the closure of the financial year, and an audited statement presented to the section AGMs and made available to the Club Management Committee.

8. President and Vice Presidents.

There may be a President and one or more Vice Presidents of the Club who shall be proposed by the Club Management Committee and approved at general meetings of the two sections. They shall have the right to attend all meetings but only have the right to vote at the Section AGMs.

9. Winding up.

In the event of the club being disbanded for any reason, the Clubs assets shall be disposed of to a suitable Charity nominated by the Club Management Committee. Any Trophies shall be offered back to the donors. No member shall gain financially from the Club.

9a. Disclaimer.

The Club accepts no Liability or responsibility for accidents or damage to boats sailed on the club water irrespective of how caused.

9b. Radio Transmitters.

All transmitter aerials having an extended length greater than 250mm shall have the tip shrouded with either a rubber ball or practice golf ball. Only radio frequencies within the permitted radio bands for surface models shall be used.

10. Data Protection Act.

Membership of the club and acceptance of these rules by the member will be deemed to constitute consent, for the purpose of the Data protection act 1984, to the holding of relevant personal data for Club administrative purposes only.

11. Additional rules for the Sailing Section Only.

(not included here)

12. Additional Rules for the Scale Section Only.

(a) Vessels Allowed.

The scale section shall only operate models powered by wind, electricity or steam. Under no circumstances shall models using internal combustion engines be allowed. This is to comply with the Forestry Commission Permit. Electric racing boats shall also be discouraged, but if so accepted the noise level must be insignificant at a distance of 75 paces from the waters edge. Scale sailing vessels and yachts are welcome but the sailing of racing yachts and higher speed electric scale models should only be allowed at the top end of the pool to avoid any risk of damage to the scale boats.

(b) Steam

A Steam Engineer and Boiler Tester shall be appointed and all steam-powered models shall be inspected and have their boilers tested, as per the current MPBA recommendations, prior to sailing. Records shall be kept of all such tests.

(c) Use of Pond.

Sailing times and programme to be set by the committee and are currently all day on Thursdays and Sunday mornings. Up to four full days on Sundays is available to the Sailing Section for Trophy events and, if such days are required, the dates will be clearly stated in the annual programme. Any major changes to these times must have the agreement of both Section committees.

(d) Further Scale Section Rules

Further rules, relevant to the Scale Section only, may be defined by the Scale Section Committee as required.

Hints and Tips

Learning the ropes by making a start....

Following my article in the last Newsletter, by now, hopefully, we have got a Workshop or workplace organized and set-up ready to get started on the awesome subject of the techniques for modelling boats and other watercraft. Perhaps you already have been fortunate enough to gather some useful basic tools and equipment together and feel that, as a handyman, you have enough confidence to build. Your toolbox should include good tools such as an (american?) handy drill with a selection of sharp H.S.S. bits from 1-10mm sizes; various screwdrivers including Philips and flat-blade down to the smallest sizes, and perhaps a hammer and pin punch; a sharp tenon saw, a coping saw, and a

piercing saw with spare blades for fine cutting of shapes and materials, in addition to an X-Acto knife or similar; metal rulers, large and small, plus gauges for internal/external measurements. Small smoothing planes, such as a David plane (available from Ripmax) and sanding blocks with sandpapers will also be needed. Now - turn the radio on to BBC 2 and make a cup of tea whilst sorting out the plans and/or drawings, photos, sketches and any information garnered through the internet or magazines. Are we going to work with plywood, veneers or plastics, and fibre-glass moulds? The choice is yours, and construction will depend on the materials chosen (of the best quality available to the pocket) and subsequently the type of adhesives. Contact glues and ordinary adhesives should be treated with caution to avoid calamitous failure when constructing, and naturally must be waterproof. There are some excellent resin products available upon which advice should be sought from the Suppliers.

The use of electrical appliances I suggest should be confined to precision tools such as those made by DRAPER or PROXXON (German). Tool Kits can include small jig -saws, variable speed drills to take bits down to 0.5 mm and sanding planes. A vertical drill stand is a useful bench tool where accuracy is essential, and a small lathe such as a MITFORD is a real luxury. Oh, and a neat precision box of taps and dies is an additional item not to be forgotten for those interesting tasks.

If you have decided on a pre-formed hull in hard plastic or glass-fibre it is a good idea to make a wooden cradle to support the shape whilst making the fittings. Of course with some scale craft it will be necessary to site, jig, and drill the inverted hull for the stern tube (available as a complete fitting from the model shop) and put in the floor bearers and base for the Motor. The tube is usually inclined at 7 degrees to the horizontal which can be judged or measured, with care and attention to freedoms and for true alignment. Bonding of the stern tube and mounts are vital to avoid stress problems later - also it maybe necessary to consider how the rudder is to hang, and bear in mind that it may have to be over-scale to get good, efficient steerage control without looking odd!

When satisfied with the basic form, a flotation test is a good idea, with added ballast to find the water line depending on the displacement of the hull (0.25 Kilo per ft -lead?). Mark the hull with a light line using a Berol marker pen or fine scribe tool. I don't think that there is a rigid guideline to the ways of going about construction except to be methodical, accurate and practical in purpose. It may vary a lot among the purists of the modelling scene and comes with experience and enthusiasm. It depends largely on how detailed and how much care is to be given to your work ethic, and the " Budget", as to how the finished replica should appear on the water.

Best of British!!

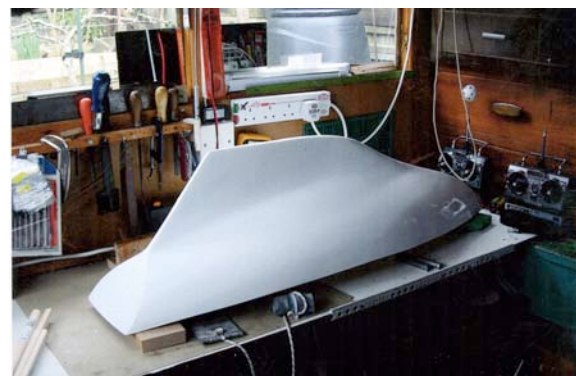
The Ponderer.



My new project: a Nordic Folkboat - here's a 'Virtual Model' in the boatyard, Parkstone Y.C.



The actual Nordic Folkboat model taking shape in my boatyard



Down to Basics... "Bottoms Up"; the Nordic Folkboat is a 26' Sloop

"Members" Adverts

A note on members adverts:

This is a free service offered to SRCMBC Members for private (i.e. non-commercial) model boat related sales. The adverts are displayed on the Club web Site and will be included in this newsletter if possible. Members using email can have a "myname@srcmbc.org.uk" email forwarding address set up for them (at no cost) to avoid attracting spam to their true address.

Lathe and Motors



Unimat Lathe, all in working order with a three jaw and four jaw chucks, transformer, and tool sharpening stone on end of lathe, plus other extras. Price: £75 o.n.o.



(left) Decaperm 6 volt geared 2.75 to 1 motor, brand new.
Price: £60 o.n.o.

(right) Marx Richard geared motor has six settings from 3 to 1 = to = 60 to 1, brand new.
Price: £25



Buyer Collects (Barton on Sea). Contact: Ken Dyer, (kdyer@srcmbc.org.uk) 01425 627244.

Canadian Canoe



One to one scale model! 16ft Cedar Strip Canoe with Spruce Gunwales and Thwarts, separate bracket for a small electric Outboard (latter not supplied), built in buoyancy, Pair of Paddles. All in good condition. Easy transported on car roof. Price: £800 o.n.o., Buyer Collects (Barton on Sea), or can deliver locally. Contact: Ken Dyer, (kdyer@srcmbc.org.uk) Phone: 01425 627244.

Graupner Altrammat 16 Battery charger



This Graupner Altrammat 16 charger has hardly been used. It will run off mains or 12V DC, will charge any sort of battery, and is programmable. It comes with all adaptor leads and instruction book.

Price: £50 including delivery within 60 miles of Salisbury. If posted there will be an extra charge.

Contact: Peter Bryant (pfb@srcmbc.org.uk) Phone: 01722 333369.

Perkasa 1/24 scale patrol boat



Wooden hull; fittings; precision control. Triple screw, 3 type 777 motors, 2 electronic speed controllers; requires radio and battery. Price: £275; Buyer Collects (Christchurch, UK); Contact: Archie Howie: phone 01425-673657

Ro-ro ferry



Deans Marine kit; 4ft long; twin screw; one electronic speed controller. Bow thruster; complete with deck freight. Price: £295; Buyer Collects (Christchurch, UK); Contact: Archie Howie: phone 01425-673657



Planet 2.4GHz Transmitter and Receiver Sets

Club member Nigel Harper (proprietor at Milford Models, 48 High Street, Milford on Sea; phone 01590 642112) is offering club members the special price of £44-50 on production of a club membership card (additional receivers: only £14-99 each).

Non-Members Adverts

HMS Intrepid Model: George Heron, author of "HMS Intrepid - Her Final Journey", is trying to locate a scale model of the HMS Intrepid (L11) for the Portsmouth Navy Days (July 30th - Aug 1st.); email George at: info@hmsintrepid.co.uk

Paddle Ship: Scratch built, robust construction, paddles with small motors in place. No radio, etc. Price: Offers over £50; Contact: Mr G Woollay 07901656804

Contact details

If your address, email, or other membership details change please make sure you contact:

Lorna Soffe, 1 Stoneleigh Avenue, Hordle, Lymington, Hampshire, SO41 0GS.

Email: membership@srcmbc.co.uk . Phone: 01425 615305

For the newsletter: please send your favourite hints and tips, adverts, or other contributions to:

Peter Taylor, 84 Priory Road, St Denys, Southampton, SO17 2HS

Email: info@srcmbc.org.uk . Phone: 023 80554670 (you will get my answering machine; say who you are and I'll either answer if I'm there, or get back to you!)

For any other queries contact:

David McNair-Taylor, 18 Wilton Gardens, New Milton., Hampshire, BH25 5UT

Email: scalecaptain@srcmbc.org.uk . Phone: 01425 618900

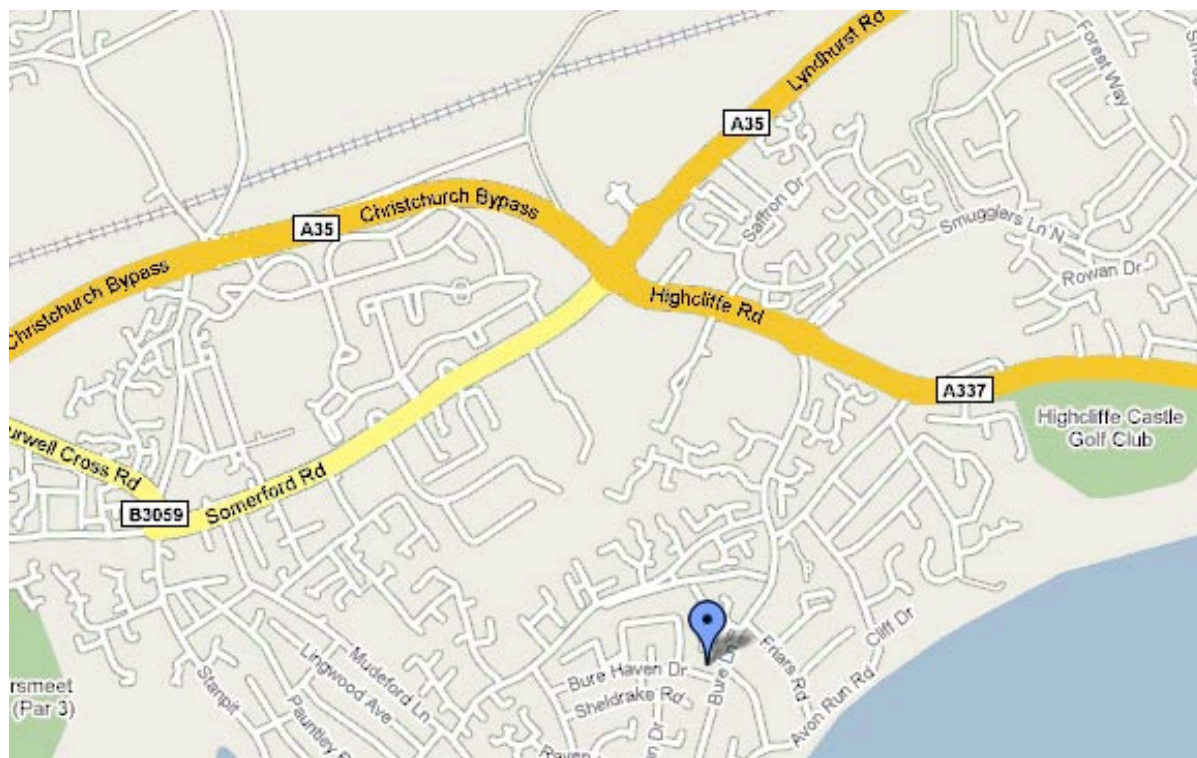
Cut off date for entry in the next issue is : 9th July 2009

But don't wait till then, send it to me now, and especially give me more time if you are submitting on paper or want me to do the "art" work!

Summer BBQ!

Carol and Ray Hellicar have generously offered again to host a Club BBQ starting 6.30pm on Friday 4th June in their garden at 3 Bure Haven Drive, Mudeford, Christchurch, Dorset, BH23 4BS. Food will be provided (around 7pm), please bring your own drinks! To allow them to organise the food, please let them know if you will be attending (and how many of you) by returning the reply slip at the bottom of this page, or phoning them on 01425 274426. Also please state any particular dietary needs (e.g. vegetarian). Although Carol and Ray have a good sized garden, please note that this is a very popular event and it may be necessary to limit the number of members attending to ensure we all fit in! **So please send your reply or phone as soon as possible to be sure of a place.**

Directions



On the A35 Christchurch Bypass/Lyndhurst Road, at the "Sainsbury's roundabout" take the A337 toward Highcliffe; at the next major roundabout turn right into "The Runway" which then becomes "Bure Lane". Having past the Sandpiper Inn on the left-hand side take the second turning right into "Bure Haven Drive" and the Hellicar's is the second Bungalow on the right.

✂-----**Reply slip**-----

Name: Telephone No.:

(Please tick)

☐ I shall look forward to attending the BBQ on Friday 4th June. I shall be accompanied by:..

.....

Any particular dietary needs:

☐ Sorry, I can't attend but expect you will have a marvellous evening.

Please mail this Reply Slip to: **Ray & Carol Hellicar, 3 Bure Haven Drive, Mudeford, Christchurch, Dorset, BH23 4BS** to arrive as soon as possible and at very latest by Friday 28th May. Alternatively, please phone them on 01425 274426 before the same date.