

January 2008 Winter Newsletter

Scale Captain's Chat

Hi Everybody and a Happy New Year to you all from myself and the Committee .

As you will notice, the newsletter has changed a bit having been taken over by a new Editor in the person of Peter Taylor who having retired was looking for a little job to help fill in his spare time. Thanks for taking over Peter. If any of you have items you would like to provide for the newsletter. stories , articles , modelling tips etc they are all welcome.



The Scale Captain adjusts the Setley Pond ball valve.

We had a great Xmas Lunch attended by about 55 members and their partners at the South Lawns Hotel . Everyone has a fantastic meal and the charity Raffle raised £150 which was distributed equally between the Macmillan Cancer Charity and Friends of Lymington and Milford Hospital, a big thank you to all who donated prizes and also to Phil at reality racing in New Milton and Darrel at Lesro Models who gave prizes . (Please support these retailers if you can, You will of course get your club discount).

The lunch was superbly organised by Mike Hammond and thanks also to the ladies who sold the raffle tickets .

2008 is the 30th Anniversary of the founding of the Club and I hope to get some additional press publicity for our Annual Exhibition which will be held on 8th March 2008 at the Highcliffe Methodist Hall on Lymington Road, Highcliffe (next to Berties Fish Shop) . Set up time from 8.30 am with the exhibition running from 10am to 4pm. It will be in conjunction with the local branch of the RNLI with souvenir stall and cake stall . Entry is free with donations to RNLI. **PLEASE COME ALONG AND BRING YOUR MODELS AND SUPPORT YOUR CLUB.** Even models in build are welcome, it all adds to the interest. We will endeavour to ensure that the number of tables is increased this year. **If you plan to come, please contact me with details of how many models you are bringing.** Accompanying this newsletter is a poster for the event; please get it displayed, I can provide extra copies.

The club Committee will meet on the 24th January to finalise the events for 2008, which will include our two steering competition days, probably two RNLI exhibitions, and possibly a special event for the 30th anniversary (fun day at the lake with BBQ)? and also maybe a "Navy Day" at the lake on a Saturday for those who have warship models. Full information on what has been decided will be detailed in the "Information for Members", issued when you pay your 2008 subscriptions!

We have been invited to exhibit at the Eastleigh Model Boat Club Model Boat Safari at Marwell Zoo on the week-end of 14/15 June (you will get free family admission on both days if you exhibit). However, I have had a letter from the Southampton Rotary Club to say that, after running for 15 years, the Romsey Annual Model World Exhibition will no longer be held.

I would just like to remind you all that Membership for 2008 is due on 1st April and Lorna and Myself will be available to take your money at the Highcliffe show. Any membership not renewed by the end of May will be deemed to have lapsed. Current Scale Section Membership stands at 112 paid up members .

I am ordering some short sleeved Pilot Shirts with Club Logo price £10 each, supplied by Collar size to add to the club range . Sweatshirts, Polo Shirts and Hats are still available and, in addition, I now have car window Stickers available (free of charge). Please see me at the lake or at the exhibition if you want one. Aerial protectors are also available from myself or Peter Oram at the lakeside, you must use one to comply with club rules and our Insurance.

The lake rental has been increased in line with inflation by the Forestry Commission but at £124 pa it is still very reasonable.

The new Non members / visitor scheme has worked well since it was introduced last year and we now have a situation where everyone using the lake on club days is covered by the required Public Liability Insurance, visitors are signed in so we also have the means of ensuring that frequency allocation is well managed. Visitors who are members of other official clubs or SWMBC Members are exempt from payment of a fee but will still be asked to sign the visitors book.

And finally just a note on Club Etiquette. We all try to sail our boats to avoid collisions and accidents but they can and do happen. Please observe the speed limit inside number 6 buoy especially when there a number of boats in the water. Try and slow down your fast boat when near smaller models so that they do not get swamped. Fast boats should be operated at speed in the area beyond number 6 buoy, but remember sailing models also use this area so keep your eye on your model at all times .

If you do happen to be unfortunate enough to have an accident please have the good manners to acknowledge your mistake, apologise and ensure that you have not done any lasting damage. I am aware that good manners normally prevail in the club but we do need to ensure that members sailing enjoyment is not spoilt by a moment of lack of good manners .

With the current number of members it is not possible to ensure members have a dedicated individual frequency allocation so please try and work with others who may have the same frequency and share the time (we do not want to run a time allocation system unless it is absolutely necessary), you may have access to other frequency chips and can change your frequency in use, it is not a bad idea to have a selection of chips with you. I personally have lent my spares to members to try and ensure that that can get on the water. We are all here to enjoy ourselves and the company of our fellow members.

That's all from me for now so it just remains to say that I hope you all have a Great 2008 and many hours of happy model boating at Setley Pond.

David

Dates for your diary

2008 Exhibitions with Club participation

8th March Solent RCMYC 30th Anniversary Exhibition: Highcliffe.

14/15th June Southern Model Boat Safari: Marwell Zoo

Other 2008 exhibitions

9th February Model Warship Exhibition: RNAS Museum, Yeovilton
(<http://www.fleetairarm.com/eventsindex.htm>)

24th February Modellers Exhibition: The Grange, Midhurst
(<http://www.thegrange.org.uk/events.html>)

12/13 April Footman James Modelling Exhibition: Royal Bath and West Showground
(http://www.nationwideexhibitions.co.uk/exhibit_detail.asp?eventtype=car&id=74).

4th May Beale Park Modelling Show (1)
(http://www.bealepark.co.uk/events_item.php?id=111).

12th/13th July Weymouth Maritime Modelling Festival
(<http://www.weymouth.gov.uk/main.asp?svid=860>).

25th – 27th July International Festival Of the Sea; Portsmouth Historic Dockyard: incorporates Model Boat Exhibition
(http://www.festivalofthesea.co.uk/wo_model_boats.aspx).

20th/21st Sept (dates to be confirmed). Model warship Week-end; Portsmouth Historic Dockyard (internet address to come!).

5th October Beale Park Modelling Show (2)
(http://www.bealepark.co.uk/events_item.php?id=111).

Greetings from your new editor!

As David has said, your new editor is me, Peter Taylor... for those of you who don't know me, I am, or was, a research meteorologist come oceanographer and here's a picture of me being presented with a sophisticated meteorological instrument (a pine cone) on the occasion of my retirement. It was because I was retiring that, when David MNT said he needed some help with the newsletter I, perhaps rashly, volunteered. I'll do my best to keep up the high



standard David has set; he certainly deserves our thanks for his past sterling work on the newsletter and, to be honest, he has also collected much of the material that is in this issue.

[A note for email users: I'm trying to reintroduce some pictures to the newsletter but David tells me that this caused problems for some of you who receive the email version. I will make the email version of the newsletter available in a number of formats, with the preferred one being Adobe "pdf" (that way you get to see the same pages that I sent you). Microsoft Word (and possibly, html) versions will also be available but these are worse options. With Word, what you see is not necessarily what I sent. For those of you who do have trouble viewing the email version I am happy to work with you to ensure you can open the attachment (in fact if you are reading this, it's probably happened already!). Using email gives the club significant savings in copying costs and postage so we would like as many people as possible to sign up and I will put effort into ensuring a good email service. Also email users get to see the whole newsletter in "full colour"! However if the worst comes to the worst we are still willing to send you the letter the old way... "through the post".]

Adverts

Claire Bowle is looking for someone to restore a model of the sailing ship Atropos. According to Wikipedia, HMS Atropos was a fictional 22-gun sloop from C. S. Forester's novel Hornblower, named after a Greek mythological figure. In the novel, Atropos is Horatio Hornblower's first command as a Post-Captain.

The ship's commission under Hornblower began in November, 1805. Atropos had a varied career under Hornblower's command, including retrieving sunken treasure off the coast of Turkey, rescuing kidnapped citizens of Malta from the Barbary Pirates of Tunis, and fighting a ship twice her size, the Spanish frigate Castilla

Claire is willing to pay anyone interested. Her contact number is 07960520983.

Hints and Tips

Now writing this next feature is presumptuous on my part because I am probably the worst modeller amongst you. Lets face it, I'm the one that wanders around the pond taking snapshots of all your marvellous boats. But I've written this as a challenge to you all... **please give me all your own valuable hints and tips, I can develop them into news articles similar to the one following.** I'd prefer them on computer file if possible, but paper is perfectly OK; I can scan in pictures and type in text... just see me at the pond with your ideas or otherwise contact me (see the end of this newsletter for contact details).

A Smoke Generator

When I bought Mike Hammond's build of the North Sea Herring Drifter "Peggy" I wanted to have the smoke effect featured by John Cooper's version of the same model. However, I could not get through to the suppliers on email, and I've since been told that the firm "JJC" no longer exists, so I decided to build my own. Like the JJC one, it is based on the mist generators used in indoor mist gardens. These have a membrane which vibrates at ultrasonic frequencies and throws water molecules into the air to create the mist effect. I used a "Mini Mist fogger" as pictured (Maplin... £14.99, code L38AK). The photos on the next page show what I came up with.

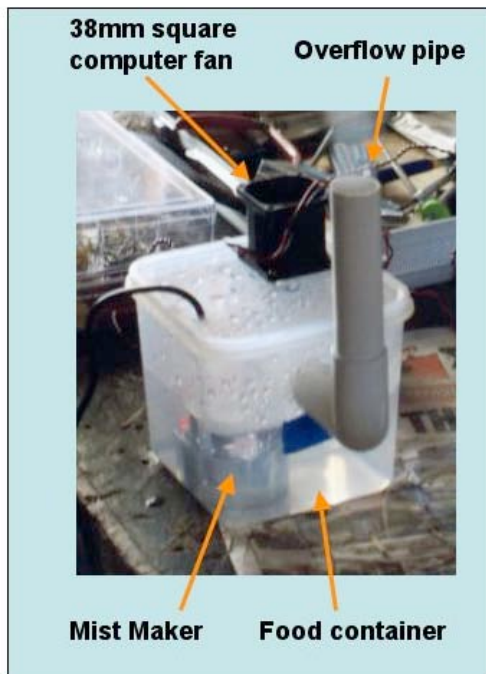


Notes for anyone wanting to do the same:

(1) the mist maker is specified as 24V AC but, (and this is the by far the most important hint here), it will actually run quite happily on 24V DC, drawing 1.5 amps. I did have trouble with the 7.5A fuse which I was using, blowing sometimes (but not always) when I switched on. As a result, I use a potentiometer to apply the power less instantaneously. However I'm now almost certain that this is not needed. If you do experience problems and follow me down the pot route always turn the pot full on straight away since small pots aren't normally designed to handle 36W! Once full on they have zero resistance and it's not a problem. For power I use two 12V, 1.2Ah lead acid batteries (in series) which gives a running time of around 1.5 hours

(2) The mist maker membranes do wear out so it's worth buying one or two spares (Maplin: £2.49, L41AK). They come with a fitting key.

3) A major problem is getting a reservoir which will fit in your model and has the



The prototype unit on test



Final funnel assembly

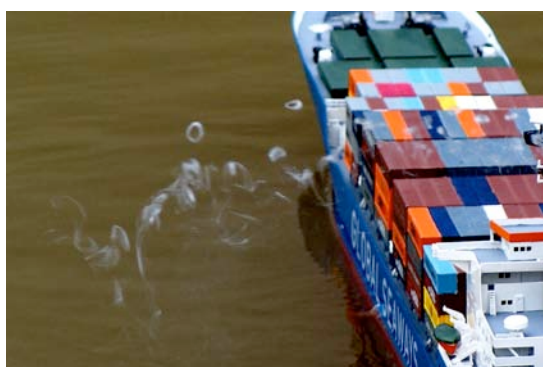
required dimensions. The mist maker works best in up to 65mm water depth and switches off at 45mm depth (the depth sensor is the black chess pawn shaped thing in the picture). The maker's body is 40mm in diameter and it uses 90ml/hr. That means if you used a pipe into which it would just fit, you would need to refill the water every 17 minutes! Also the mist maker creates a fountain of water above it, so you need to be able to position the fan away from that. All this implies that we can only fit it in larger models and that a oil based generator is the better bet for smaller models. I used a food container, but such containers are usually wide compared to deep. I now realise that the plastic containers for washing machine liquid sachets are a better shape, are free, and come in different sizes (small at the Coop, larger at Waitrose!).

(3) I chose a 38mm square computer fan (£4.99, Maplin code A38GU). Run at the specified 12V it instantly blew all the mist away! I now power it at 4.8V using four NiMH batteries. Computer fans usually have red, black, and yellow leads. The yellow one tells the computer how fast the fan is running as a safety measure; just cut it off. Also, because the fan has this modicum of intelligence it won't run backwards if you reverse the polarity - which is possibly a consideration in how you decide to mount it.

(4) My prototype (left picture above) featured a short exhaust pipe which produced a realistic smoke effect from the funnel because there was enough room for the smoke to fill the funnel diameter. However condensation inside the funnel meant water was dripping into the model close to the propulsion motor... not a good thing. The final version of the exhaust pipe (see right hand picture above) extends nearly to the top of the model's funnel. I used a cut down polythene funnel and tapestry canvas as a "crow catcher"/smoke diffuser to get the same full diameter smoke effect. I needed about 1 square inch of the tapestry canvas so I have plenty left if someone wants a bit - but you do need to waterproof it!

(5) In my Peggy I have two mist makers with independent power supplies to give me twice the smoking time (or twice the smoke)! This was partly because I had the room in the food container for an extra mist maker, and also because I needed more ballast in the model. Let's face it, any ballast you use may as well be useful ballast so install more batteries!

“You may Smoke in this area”



(top) My home made generator in Peggy
pictured on a misty morning;
Ray Hellicar's Loyal Moderator with
modified Graupner oil burner;

(middle) John Cooper's Peggy with JJC unit;
...now “The Real Thing”... Peter Oram's
steam powered launch puts us all to shame;

(bottom) David McNair-Taylor's Sydney
Star does it's smoke ring party trick (oil
burner)

Contact details

Please, please, send your favourite hints and tips, adverts, or other contributions to:
Peter Taylor, 84 Priory Road, St Denys, Southampton, SO17 2HS
email: pktaylor@gotadsl.co.uk Setley Pond: most Sundays, some Thursdays
phone: 023 80554670 (you will get my answering machine; say who you are and I'll
either answer if I'm there, or get back to you!)

Cut off date for entry in the next issue is : 31 March 2008

But don't wait till then, send it to me now, and especially give me more time if you
are submitting on paper or want me to do the “art” work!

View the SRCMYC photo web site...

<http://www.photobox.co.uk/album/2406543>

...your model is probably there, prints are available at cost price, contact me!